



18 Cell-23 Plate

(With or without cover)

Tray Size: 38.25" x 26.76"

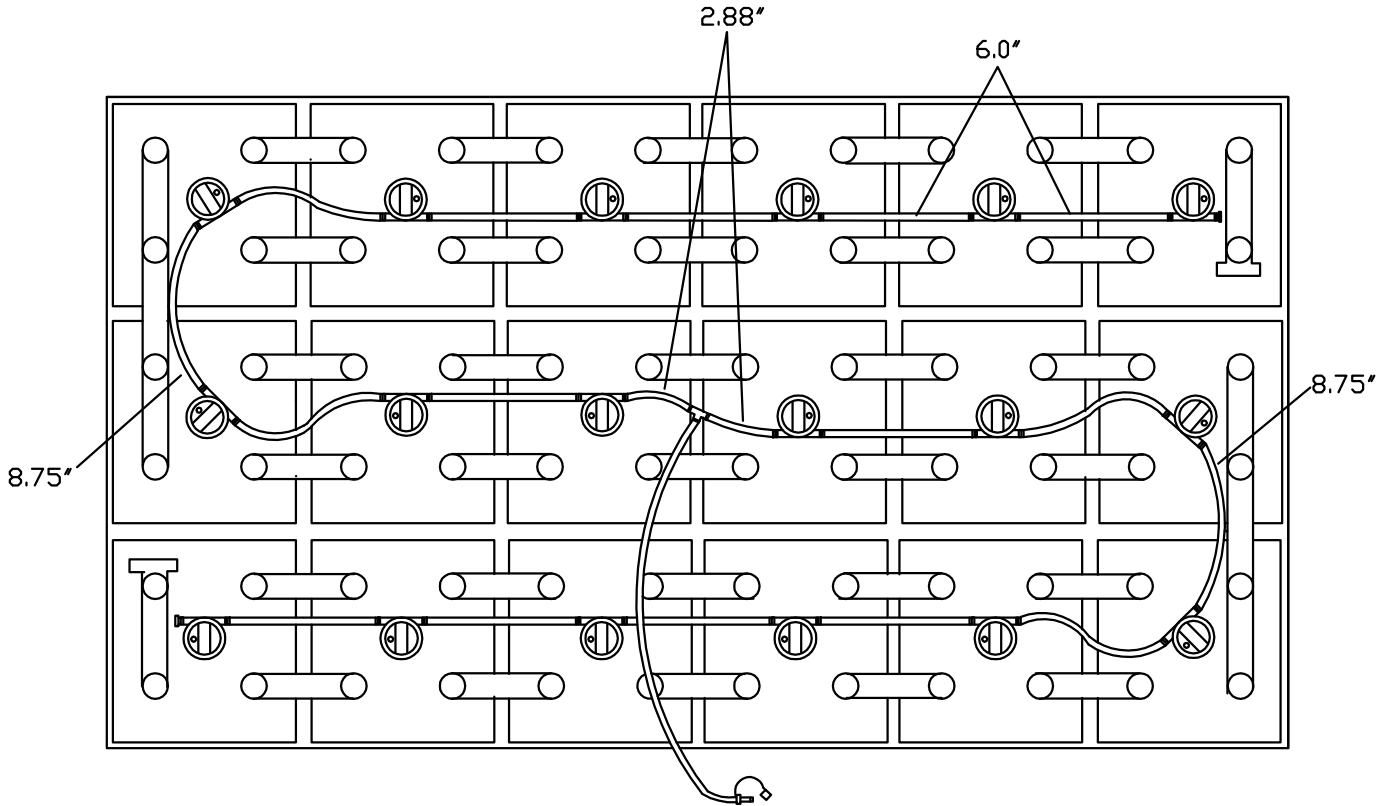
Rev.1 11-25-2013

EZ F-18232

EZ Fill

Please follow the drawing precisely as shown.

Note: Remove battery caps, lay string of valves on battery as shown in the diagram below. Snap each valve into the corresponding cell. Make sure all tubing remains unobstructed. Always water battery after charging is complete.



| Part # | Description | Quantity |
|---------------|-------------------|----------|
| VARIOUS | Low Profile Valve | 18 |
| BWT-08TUB6BLK | 6mm Tubing | 16 ft. |
| BWT-08T666N | 6-6-6 T Piece | 1 |
| BWT-09BDCAP | Dust cap | 1 |
| BWT-09MBLU1 | ¼ Male connector | 1 |
| BWT-08CAP6 | End cap | 2 |
| | | |

2366 Bernville Rd
Reading, PA 19605

Phone: 1-800-538-3627
Fax: 610-208-1717